



# A Guide for Architects

**2025 EDITION**







# EWI Pro is Redefining the Standards of Render & External Wall Insulation

At EWI Pro, our journey as system designers is rooted in a rich and diverse history. Through constant innovation and evolution, we've consistently stayed ahead of industry trends, earning our place as the leading name in render and external wall solutions.

As a trusted partner to architects, builders, and developers across the UK and beyond, we are proud to provide the expertise and reliability needed to support your projects.

## Contents

Who are EWI Pro? . . . . .	04
Technical & Specifications . . . . .	05
Business Development Team . . . . .	05
Office-Based Technical & Specifications Team . . . . .	06
On-the-Road Technical Operations Team . . . . .	07
The Evolution of EWI Pro: Products & Systems . . . . .	08
Where Classic Meets Contemporary: Our Lime Heritage Range . . . . .	09
Accreditations & CSR . . . . .	09
Case Studies . . . . .	10



# Who are EWI Pro?



## A Market Leader in the Render & Insulation Industry

Since 2016, EWI Pro has provided innovative solutions in render and external wall insulation, backed by years of expertise.

We provide cutting-edge products that improve energy efficiency while elevating the external appearance of buildings, enabling our clients to achieve their goals with confidence.

With over 50 years of combined industry expertise, our Technical Team provides unmatched guidance from classroom learning to on-site application.



**40,000+**  
Properties Insulated



**250,000+**  
Buckets of Render Sold



**98%**  
Positive Feedback On Trustpilot



## Our Commitment to Sustainability

Reflected in our people, processes, and planet-focused initiatives. From our EPS recycling system, which cuts waste, to our eco-friendly lime render range, designed for sustainable construction and minimal environmental impact, we prioritise greener practices across all branches.

# Technical & Specifications

At EWI Pro, we understand that every project is unique, which is why our systems are designed with site-specific specifications tailored to individual needs.

Our specifications address key challenges such as:

- Thermal Bridging
- Ventilation
- Air Tightness
- Pressure and Heat
- Moisture Conditions

These considerations ensure systems that:

- Remain effective for up to 60 years
- Increase energy efficiency
- Improve overall thermal comfort



**Pullout Testing** - Josh from our BDM team supporting an installer with Pull Out Testing.

# Business Development Team



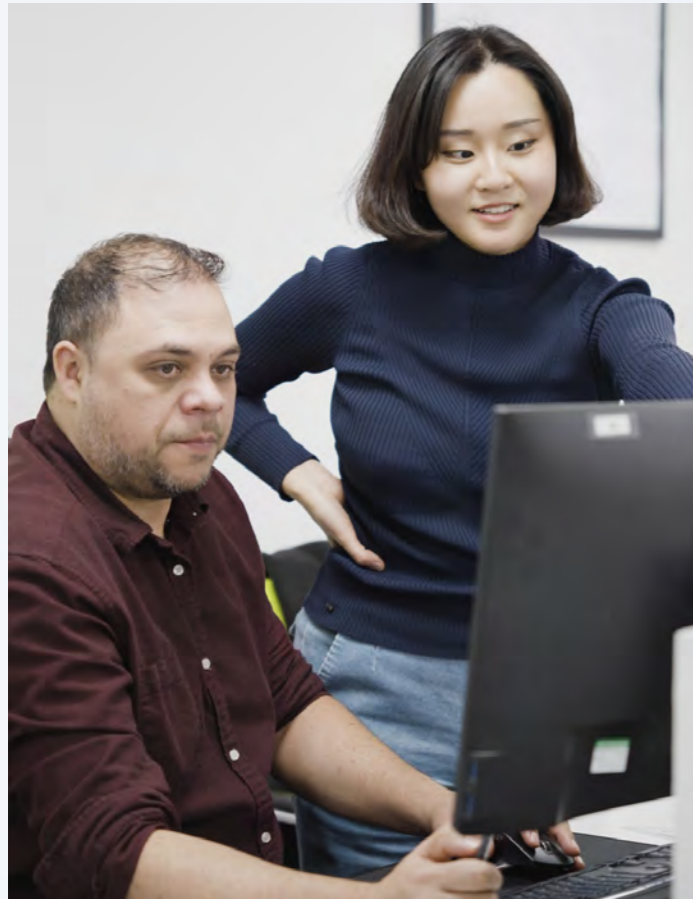
**Jon Powell** - Head of Commercial Development.  
Contact this team on: [architects@ewipro.com](mailto:architects@ewipro.com)

Managed by Jon Powell, our Business Development Managers are always available to guide you throughout your journey with EWI Pro.

- **Application Advice:** Should any issues occur during the installation process, we can offer both over-the-phone and on-site support.
- **Technical Support:** Our Business Development team are the gateway to our talented office-based and on the road technical support teams.



# Office-Based Technical & Specifications Team



**Douglas Silva** - Technical Specifications & Service Manager.  
Contact this team on: [technical@ewipro.com](mailto:technical@ewipro.com)

Led by Douglas Silva, this team is dedicated to helping architects overcome technical challenges with innovative solutions.

Comprising Architectural Technologists, Technical Services Experts, and Business Support Managers, they provide expert guidance to ensure projects meet the highest standards.

**Specifications:** Addressing key challenges such as, Thermal Bridging, Ventilation, Air Tightness, Pressure and Heat Moisture Conditions.

**3D Modelling:** Enables architects and engineers to create detailed, accurate representations of building exteriors for precise EWI system application.

**U-Value Calculation:** Our systems significantly lower U-values, enhancing a building's thermal efficiency. We conduct pre- and post-works tests to show the effectiveness of the system.

**WUFI Analysis:** Employs advanced algorithms to predict heat and moisture conditions in building components.

**Wind-Load Testing:** Verifies the system's ability to withstand high wind pressures.



# On-the-Road Technical Operations Team



**Paul Christmas** - Head of Technical & Training.  
Contact this team on: [technical@ewipro.com](mailto:technical@ewipro.com)

Headed by Paul Christmas, this team offers in-person and on-site technical support for projects of all sizes nationwide.

With over 60 years of collective practical experience, the team also manages three industry-leading Training Academies, ensuring installers are equipped with the latest skills and knowledge.

**Pull-Out Testing:** Ensures secure anchoring of fixings to substrates under stress.

**Thermal Imaging:** Identifies thermal bridges and leakage, pinpointing areas for improvement.

**On-site Audit:** We regularly audit the site to ensure projects are being installed to the best possible standards.

**Installer Training:** Our UK-wide directory connects you with skilled professionals trained through our BBA approved courses, ensuring your project is in expert hands.



**WUFI Analysis** - A cutting-edge software tool designed for simulating the transient coupled heat and moisture transfer in multi-layer building components.





# The Evolution of EWI Pro: Products & Systems

Since our founding in 2016, EWI Pro has been a pioneer in the external wall insulation and rendering industry. Through continuous innovation, we have adapted to the evolving needs of modern construction, offering exceptional performance, durability, and design flexibility.

**Pebbledash is outdated. Monocouche is liable to cracking.**

Pebbledash is the epitome of 'dated design' and has been out of fashion for a very long time - fortunately our system can cover it. Monocouche, once a popular render option, has been replaced by silicone-based systems for good reason - it is similar but better in every way.

**Silicone is simply better.**

Silicone render offers all the aesthetic appeal of Monocouche but with enhanced quality, durability, easy maintenance, and longer lifespan. Its water-repellent and flexible properties ensure a clean, crack-free finish that stands the test of time.

**For modern, reliable, and stunning exteriors in any colour, silicone is the superior choice.**



# Where Classic Meets Contemporary: Our Lime Heritage Range

In 2020, we introduced our lime-based systems, catering to projects that require breathable and sustainable solutions for historic and traditional buildings. These systems balance performance with the preservation of architectural heritage, ensuring compatibility with older structures.

Lime systems manage moisture effectively, promoting healthier buildings. They absorb CO2, reduce carbon footprints, and ensure durability with self-healing properties. Their natural look suits both modern and traditional designs, while being versatile and non-combustible for safe, sustainable construction.

**Always innovating.**

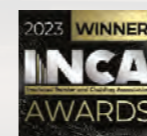
At the heart of our recent innovation lies **DuraShield Pro (DSP)**, launched in 2024 as the next generation of external wall insulation systems.

Our DSP system offers unmatched durability with a 60-year warranty and triple the strength of conventional systems. Accredited by Ofgem, it qualifies for funding covering 45% of project costs, while supporting greener, energy-efficient practices.



# Accreditations & CSR

EWI Pro holds key certifications and memberships that highlight our commitment to quality and innovation in our industry.



Nick Miles - Director of Commerce & Product Innovation.



# The Streets

## New Build Residential Properties Featured on Grand Designs



### Project Overview

Located in Lowfield Green, York, "The Streets" is a pioneering self-build project where York Council has facilitated the development of custom homes by selling plots with planning permissions. This remarkable initiative features three distinct properties, each highlighting the transformative potential of modern render systems.

**Substrate:** 2 x SIPs, 1 x BlokBuild

**System:** Integrated insulation systems

**U-value:** 0.018 W/m<sup>2</sup>K

**EPC Rating:** A

**Funding:** Private

**Energy-saving Features:** Integrated insulation, floor insulation, solar panels



# The Results

## Home Build 1

This home features EWI Pro's Pure White Silicone Render (EWI-075) paired with brick slips, delivering a durable and crack-resistant finish. The breathable render enhances weather resilience and complements the home's timeless aesthetic, making it ideal for external wall insulation systems.



## Home Build 2

The exterior of this home utilises render carrier boards, render, and brick slips. This combination integrates the classic charm of brick with the advanced insulation properties of modern render systems. The render and brick slips also improve thermal performance, while blending traditional and contemporary design elements seamlessly.



## Home Build 3

This property is finished with EWI Pro's Pure White Silicone Render, providing a bright, durable, and protective facade.





# Keel Wharf

## Residential Medium-Rise in Liverpool



### Project Overview

The Keel Wharf project highlights the adaptability and impact of EWI Pro systems, addressing issues such as fire safety concerns and poor U-values in new blockwork.

This renovation ensures improved energy efficiency, safety, and comfort, providing tenants with a more durable and cost-effective living environment.

**Substrate:** Blockwork and sheathing board

**System:** 100mm & 200mm Mineral Wool insulation

**U-value Achieved:** 0.13 W/m<sup>2</sup>K

**EPC Rating:** Improved from a C (2017) to a predicted A

**EWI Pro Representative:** Henry Campbell



### Insulation

Mineral Wool for exceptional fire resistance, thermal performance, and acoustic benefits, paired with fire-resistant sheathing boards for added safety and durability.



### Energy Efficiency

Enhanced U-values, energy-efficient lighting, heating, and water systems, reducing tenant energy costs by up to £700 annually.



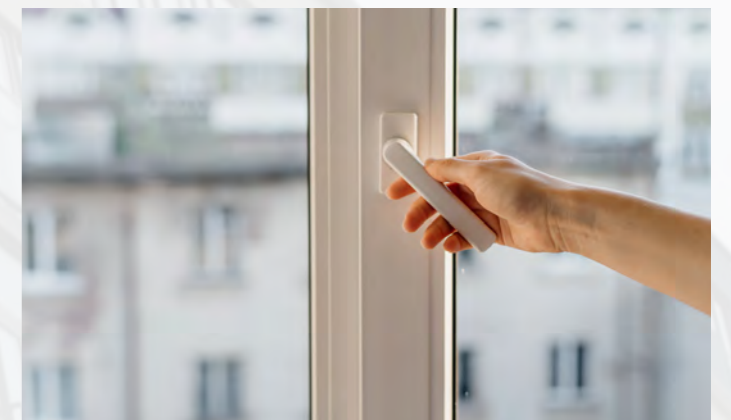
### Weatherproofing

Silicone render façade offering long-lasting protection for up to 25 years.



### Acoustic Comfort

Mineral Wool's superior sound insulation improves indoor comfort with high noise reduction and sound transmission ratings.





# Howgate Close

## Highly Energy-Efficient New Build Residential



### Project Overview

Located in the small parish of Eakring, Nottinghamshire, Howgate Close is a pioneering development addressing critical issues of affordable rural housing and biodiversity loss. Conceived by Dr Parsons in 2015, the project transformed 10 acres of arable farmland into a sustainable community, including nine energy-efficient rental homes, 60KW solar panels, 10,000 trees and hedgerows, wildflower meadows, scrubland, and a wetland to enhance biodiversity.

### Southerly Orientation

Maximises sunlight exposure for natural heating during winter while incorporating shading to prevent overheating in summer.



### High Thermal Mass Super-structure

Utilises materials like bricks and concrete to stabilise indoor temperatures by absorbing and releasing heat.



### Super-Insulated Envelope

Reduces heat loss and gain with heavily insulated walls, roofs, and floors, as well as high-quality windows and airtight sealing.



### Renewable Energy

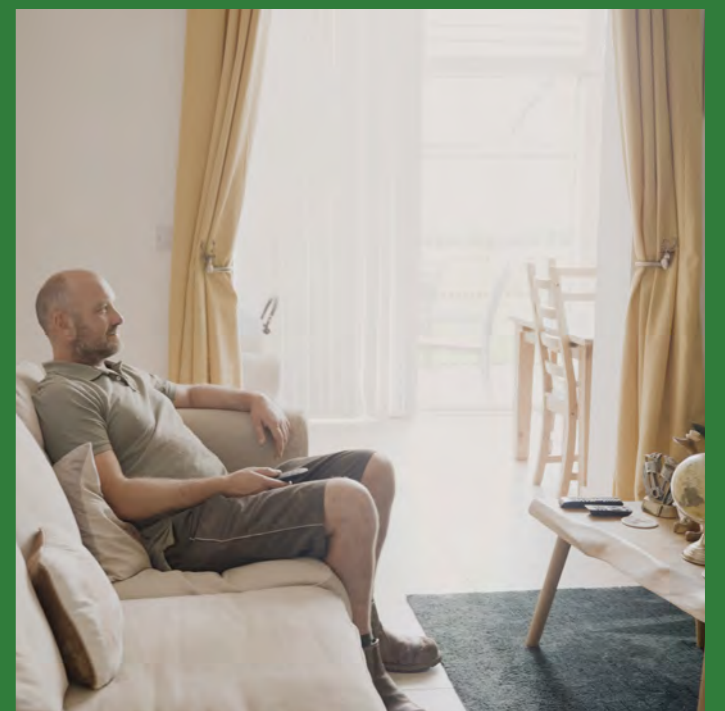
Solar photovoltaic panels generate on-site electricity, reducing reliance on non-renewable energy.



### Results

- Daily energy costs of just £1 per home.
- One of the most energy-efficient housing developments in the UK, demonstrating the potential of sustainable design for affordable housing.
- Wall U-Value:  $0.13\text{W/m}^2\text{K}$ .
- Air Permeability:  $0.33\text{m}^3(\text{h}\cdot\text{m}^2)$  @ 50 Pascals.
- As-Built SAP Ratings: 143A (2-bed homes) and 129A (1-bed homes), placing the development in the top 0.01% for energy efficiency in the UK.

**Howgate Close exemplifies the future of low-energy, environmentally conscious housing solutions.**





# Oddfellows Arms

## Render-Only Commercial Retrofit



## Project Overview

The Oddfellows pub in Bradford was in disrepair, with peeling and cracked render. EWI Pro's Business Development Manager, Tyler, recommended the EWI-075 Silicone Render System to revitalise the façade. The project, carried out by Rendacoat's six installers, took just over a month and was completed without disrupting the pub's operations.

## Preparation

- Damaged render removed, and surface cleaned thoroughly.
- Surface defects repaired with fillers or repair mortars.
- Primer applied to enhance adhesion.



## Basecoat Application

- EWI-269 Lightweight Basecoat applied (6-8mm thickness), cured for several days.
- Fibreglass Mesh embedded for strength and crack prevention.



## Final Render

- EWI-075 Silicone Render applied (1-3mm thickness) and textured for a polished finish.
- Careful curing monitored to avoid environmental interference.



## Final Touches

Solar photovoltaic panels generate on-site electricity, reducing reliance on non-renewable energy.



## Key Benefits

- Curb Appeal:** A revitalised exterior enhances the pub's visual charm, drawing in more customers.
- Brand Alignment:** Opportunity to align the façade's look with the pub's identity using specific colours and textures.
- Insulation Improvement:** Modern render materials improve thermal efficiency, reducing heating costs and enhancing customer comfort.
- Customer Reassurance:** A refreshed exterior instils confidence in the pub's upkeep, safety, and cleanliness.



Tyler Cooper from our BDM team celebrating the finished project with our client.



# Watford Community Housing Project

## Funded Retrofit Residential



## Project Overview

The Watford Community Housing project highlights the impact of modern rendering systems in delivering energy-efficient and sustainable homes. As part of their retrofit initiative, Watford Community Housing is upgrading 285 properties with funding from the Social Housing Decarbonisation Fund, focusing on improving energy efficiency for homes with EPC ratings below C.

## Key Details

- Timeline: Phase 1 (101 homes) completed January 2024; Phase 2 to finish in 12–14 months.
- Contractors: South Coast Insulation Services Ltd and Kooka Developments Ltd, both long-time partners of EWI Pro.

## Challenges and Solutions

The major issue that the project encountered was the various substrates. However, our EWI Pro systems combat this by being suitable for all substrates including:



Mixed Masonry



Pebbledash



Existing Render

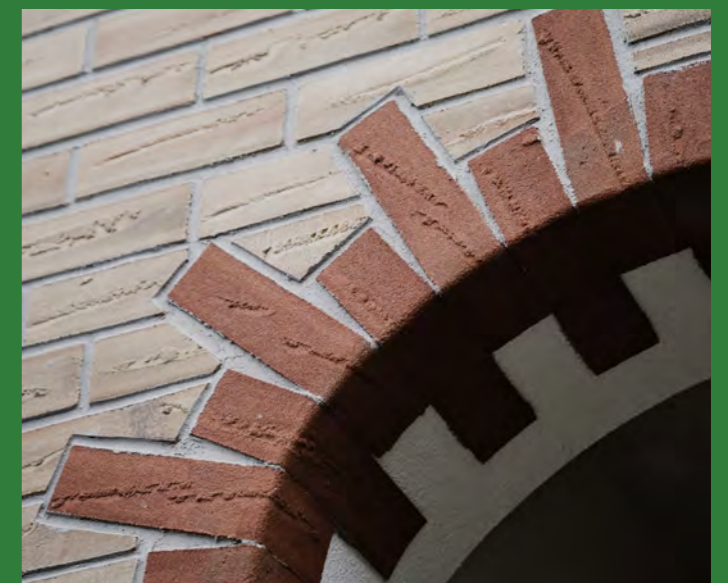


Brick/Painted Brick

## Key Benefits

- Up to £700 annual energy savings per tenant (Energy Saving Trust).
- Improved thermal performance, weatherproofing (up to 25 years), and durability.
- Condensation control via vapour-permeable renders and insulation that prevents internal cold spots.

**This project highlights EWI Pro's expertise and strong partnerships in delivering energy-efficient housing solutions.**







**Email:** [info@ewipro.com](mailto:info@ewipro.com)

[architects@ewipro.com](mailto:architects@ewipro.com)

[technical@ewipro.com](mailto:technical@ewipro.com)

**Web:** [www.ewipro.com](http://www.ewipro.com)

**Contact:** 0800 133 7072

EWI STORE LIMITED is registered in England No. 07665021  
Unit 1-2, King Georges Trading Estate, Davis Road, Chessington, England, KT9 1TT



EWIPRO



[www.ewipro.com](http://www.ewipro.com)