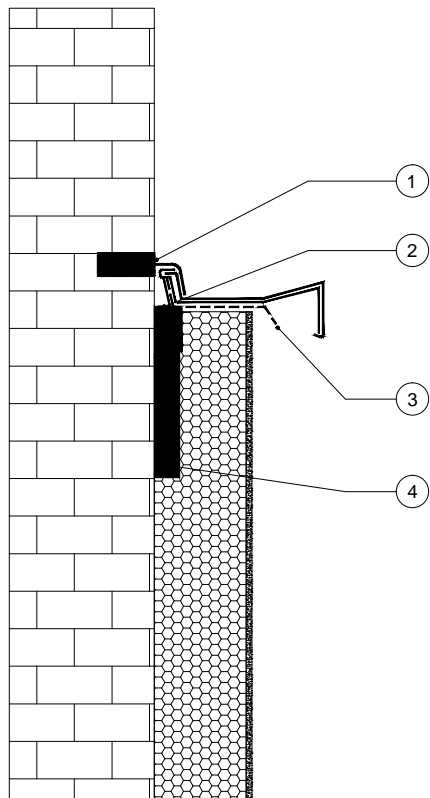


↑
CHIMNEY



1. Grind 10mm x 30mm into existing mortar pointing if possible and install substitute lead flashing with clips. If this is not possible remove all cement and repoint once substitute lead flashing has been installed
2. Compressible sealing tape between verge channel and substrate
3. Flexible continuous (i.e full width of elevation) waterproof membrane sandwiched between channel and verge trim, dressed over EWI
4. Insulated Fascia ($R \geq 0.6 \text{ m}^2\text{K/W}$)

DRAWING TITLE: Scenario4-Solution B1 Chimneys (Flush Chimney)



DRAWING No: EP-071

DATE: 09-02-2022

SCALE: NTS

REFERENCES:

EWI Pro Insulation Systems LTD.
Kingston Business Centre Unit1
Fullers Way South
Chessington KT9 1DQ