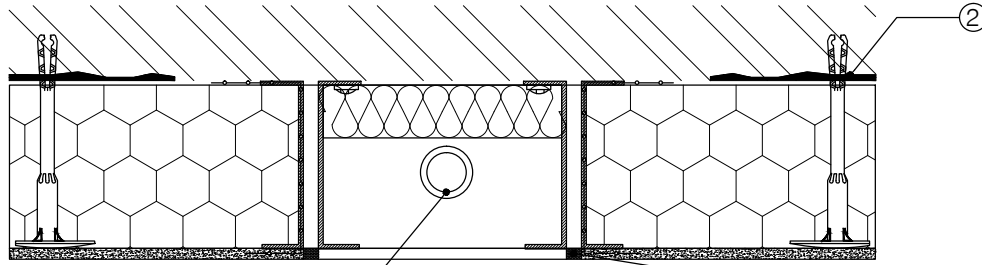


PLAN SECTION-EXTERNAL PIPE/CABLE

WEATHERING RISK
RISKS: N/A
SOLUTIONS: N/A

1. Cable or pipe removed and repositioned forward of the EWI system
2. Leveled wall surface
3. Service enclosure to be sealed against EWI system with backing rod and mastic seal. for gas pipes, enclosures must have removable ventilated covers in accordance with the specification for the installation of external wall insulation ensuring safety and operation of fuel burning appliances V.1.0 3st march 2017. ensure that the EWI system is fully sealed to the wall to prevent gas entry into the system.
4. Retained cable or pipe.



PLAN SECTION-THIN BOARD INSULATION BEHIND GAS/ELECTRICAL SERVICE ENCLOSURE

DRAWING TITLE: Gas Pipe/Electrical Cables

DRAWING No: EP-060

DATE: 09-02-2022

SCALE: NTS

REFERENCES:
WRD-G001



EWI Pro Insulation Systems LTD.
Kingston Bussines Centre Unit1
Fullers Way South
Chessington KT9 1DQ