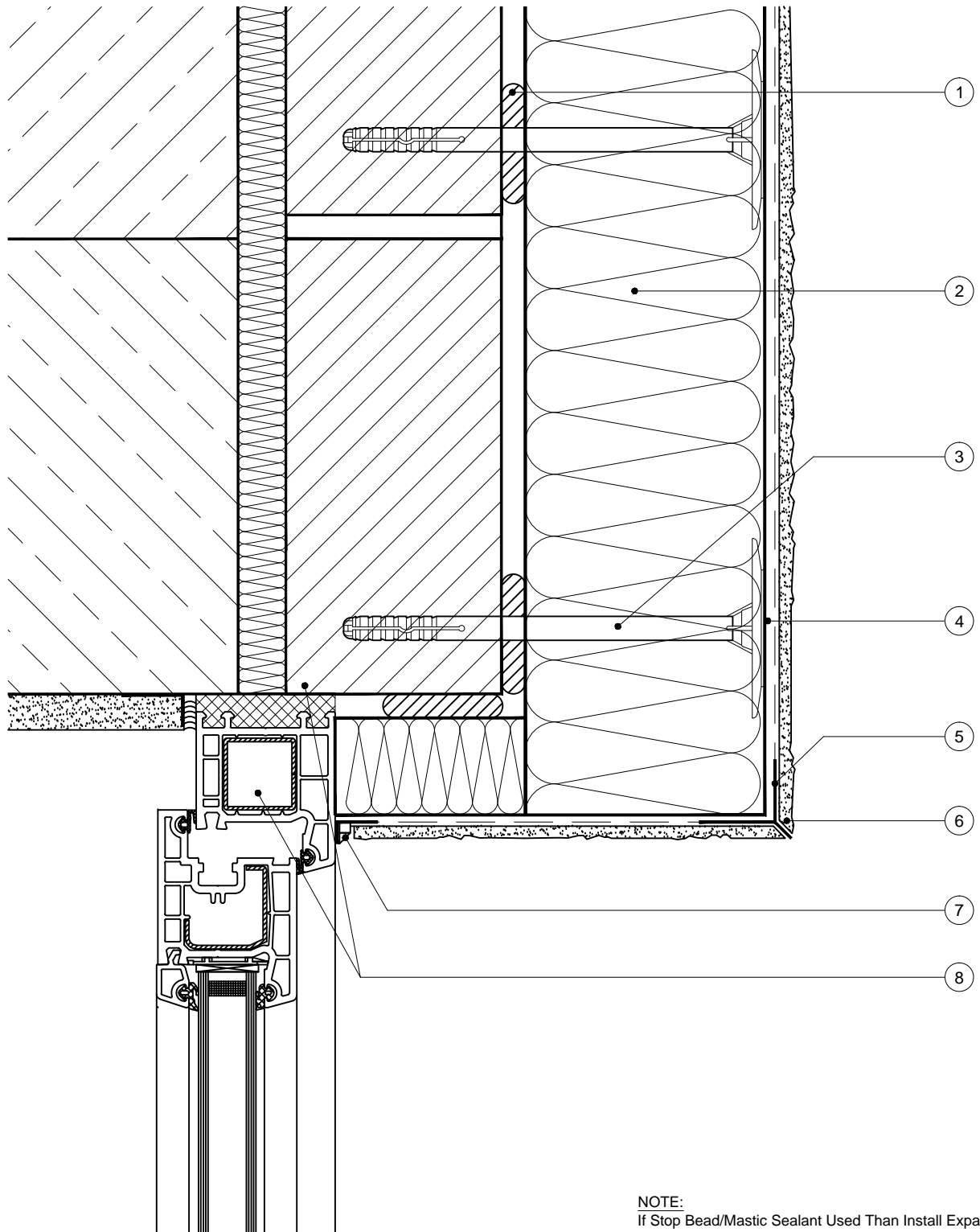


# CROSS-SECTION VIEW OF WINDOW HEAD OR OPENING



**NOTE:**  
If Stop Bead/Mastic Sealant Used Than Install Expanding  
Tape Pressed Against Edge Of Insulation and Window Frame

1. Insulation Adhesive.
2. Insulation.
3. Mechanical Fixing.
4. Basecoat + Fibreglass Mesh.
5. Window Head Bead.
6. Topcoat.
7. Apu/Window Reveal Bead.
8. Window Head & Reveal.

DRAWING TITLE: External insulation installed to a recessed window head with an insulated reveal



DRAWING No: EP - 010

DATE: 09-02-2022

SCALE: NTS

REFERENCES:  
WRD-WH001

EWI Pro Insulation Systems LTD.  
Kingston Bussines Centre Unit1  
Fullers Way South  
Chessington KT9 1DQ